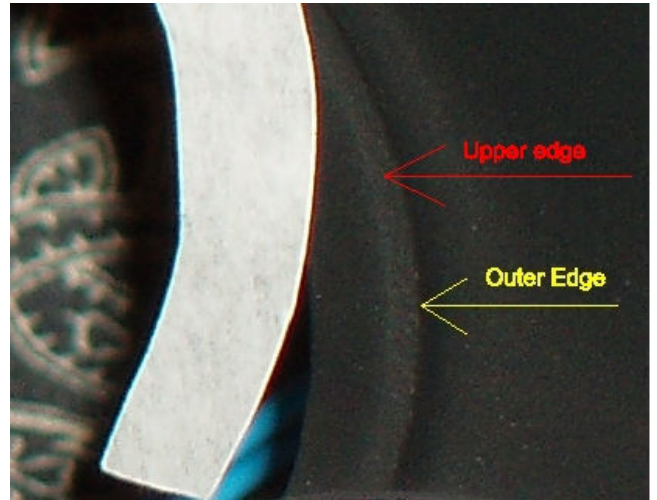


Gauge Bezels Installation

- All the vinyl gauge bezels come with high quality ultra clear masking tape.
- Do not apply the vinyl bezel exceed the outer edge of actual gauge bezel since it will not look good after finish installation
- Must clean the bezel with alcohol and your hands real clean. During installation, keep checking you hands because they'll get dirty real fast
- Install the 2 big center bezels first because they are big and easier to install so you will get familiar with the installation process.
- Find an angle of your room lighting so you can see thru the clear masking tape.
- Peel off the vinyl bezel with ultra clear application tape on top of it.
- Apply the vinyl bezel on the actual upper edge gauge bezel so the vinyl bezel will not overlap the outer edge. Apply about $\frac{1}{2}$ inch at a time just on the upper edge. If it does not fit right on the first attempt, you can peel it off and reapply; however, try to do it less than 4 times.
- After finishing apply the vinyl bezel on the upper edge and it goes nicely around the upper edge, you can use your finger nail to press it so the bezel vinyl will sit firmly on the upper edge.
- Peel the ultra clear application tape off the vinyl. Using your finger to massage the vinyl to the rest of actual bezel.



Gauge Bezels Installation (cont.)

- There are 2 closed loop bezels. Peel one of the almost closed loop vinyl bezel off the backing paper at a time.
- Apply those vinyl bezels using the same method as others. Start it at the bottom of the closed loop bezel (the 2 outer bezels). When it gets close to the starting point, start peel off the clear application tape a bit so a little of the vinyl bezel will overlap about 1/16" to 1/8". It is at the bottom of the 2 outer bezels and those spots are the darkest spots so you would not notice anything.



More pictures

